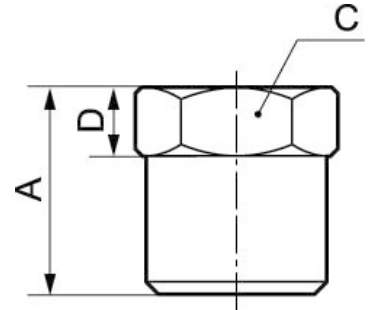


FITTINGS EXTENDERS, PLUGS

Tapered hexagonal male plug - A18



Min / Max operating pressure

0 / 15 bar

Part number	Male thread	Dim. A (mm)	Dim. C (mm)	Dim. D (mm)
A18 18	R1/8	12	10	4.5
A18 14	R1/4	15	14	4.5
A18 38	R3/8	16	17	4.5
A18 12	R1/2	17	22	5.5
A18 34	R3/4	21	27	5.5